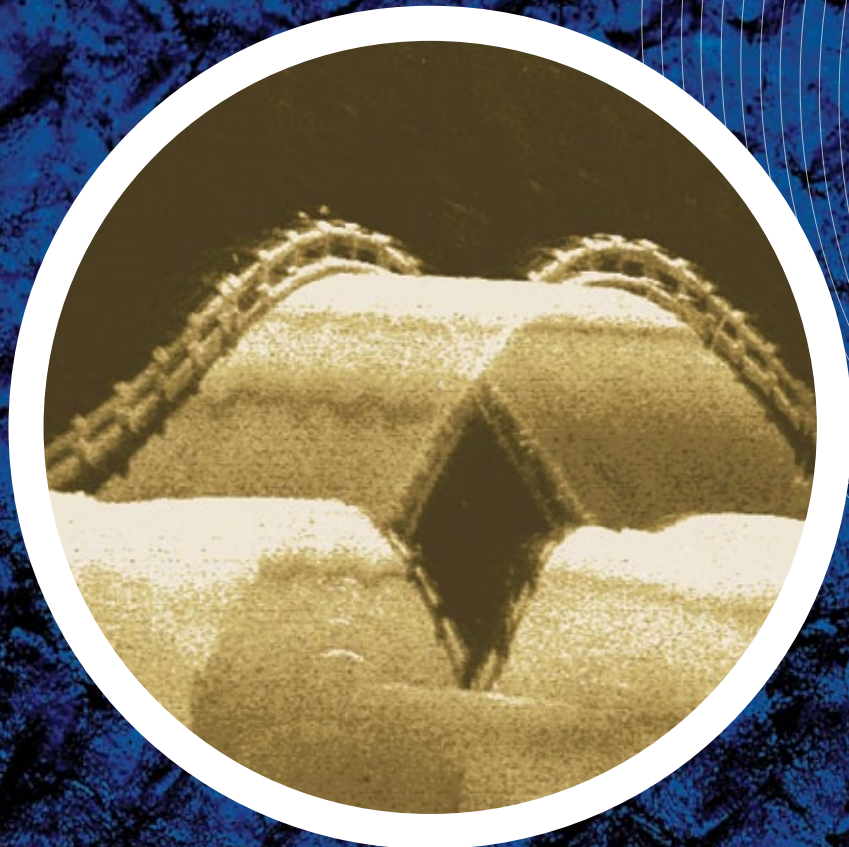


Lowrance 2010

NEW StructureScan™
Sonar Imaging for HDS®



LOWRANCE®

www.lowrance.com

A Navico brand - Leader in Marine Electronics

Proven StructureScan™ Sonar Imaging for HDS®

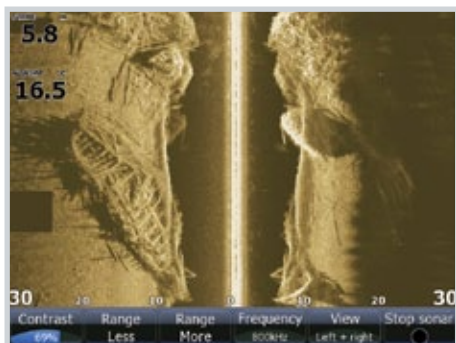
Clearly Shows Fish & Structure Like Never Seen Before.

It's the most incredible Lowrance fish-finding technology. The StructureScan™ sonar imaging system option for HDS. Enjoy the highest level of structure- and fish-finding clarity, with the first and only true, panoramic underwater imaging with phenomenal picture-perfect display detail...to the left, right, and exclusively, straight down coverage below your boat! So you get a more complete and vividly sharp underwater look—with virtually hands-free operation—for an unmatched fish-finding edge.

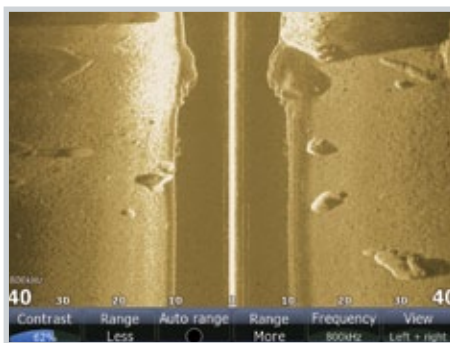
From wide-area scouting to close-in fish/structure targeting...from exclusive imaging overlay and color display choices to unique GPS guidance tools...from multi-window displays to simple plug-and-play boatwide networking and more...Lowrance LSS-1 StructureScan™ imaging system is the most complete and effective fishing power tool that's never been seen before.

Your Future Fishing Success Has Never Looked Better

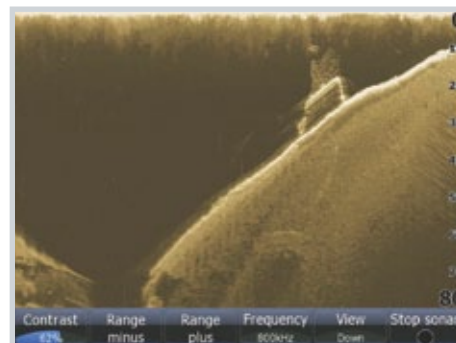
Genuine, unretouched on-the-water HDS screen captures with the Lowrance StructureScan™ imaging system.



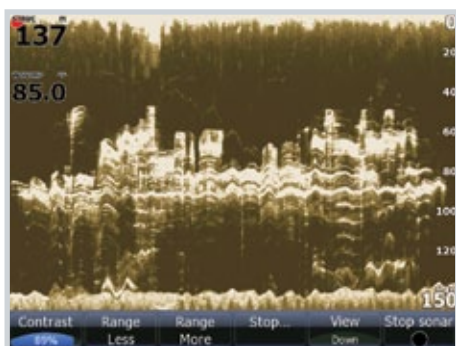
SideScan Imaging – Advanced StructureScan technology produces incredible SideScan viewing dimension and detail like this skeleton of a sunken boat.



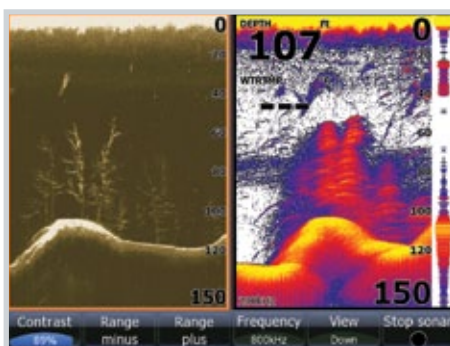
SideScan Imaging – Wide-coverage SideScan search reveals important structure as rock piles, boulders, timber and other fish habitats.



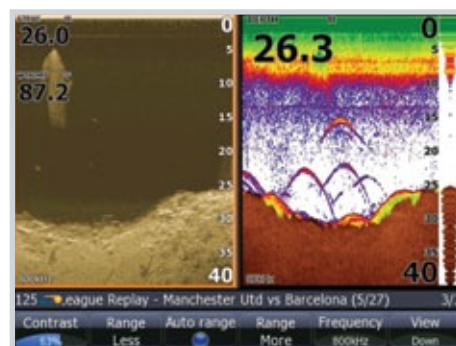
DownScan Imaging – Exclusive Lowrance down-looking imaging innovation presents an incredible, highly defined and refined picture for structure identification than side-looking imaging alone—as this submerged bus showing bait clustered above it.



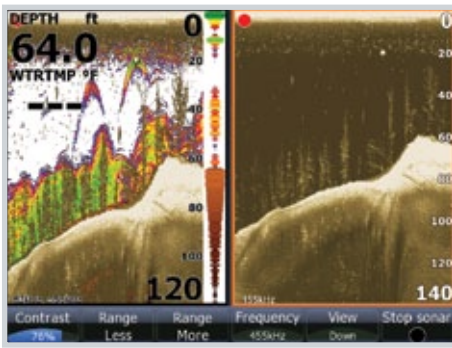
DownScan Imaging – Even in 4 ft. sea waves and at over 130 ft. deep, StructureScan down-looking imaging shows profile detail of the sunken Vandenberg ship reef off Key West.



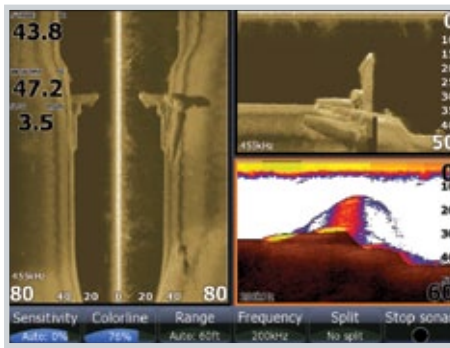
DownScan Imaging™ with Broadband Sounder™ – This dynamic duo of two exceptional Lowrance technologies is unmatched for effective fish-and structure-finding. DownScan Imaging (left) details tree structure and potential fish targets. Advanced, built-in HDS Broadband Sounder digital sonar confirms fish as arches.



DownScan Imaging™ with Broadband Sounder™ – With StructureScan and HDS, you miss nothing in spotting productive fishing instantly. Here, DownScan Imaging (left) shows a baitfish cluster and dots of predators. Broadband Sounder sonar (right) exposes those game fish.

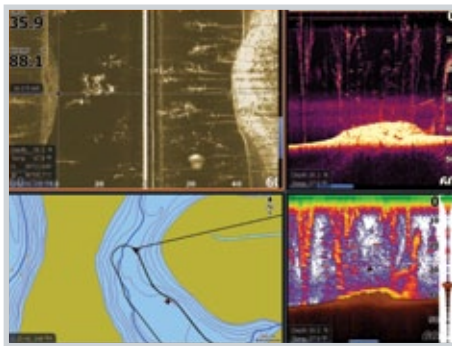
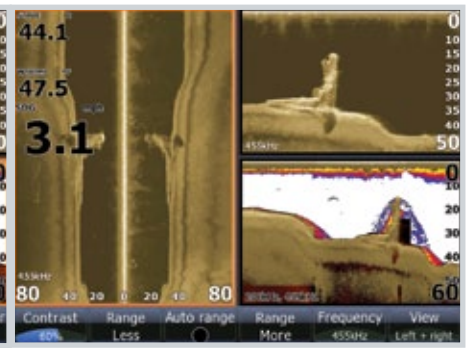


Exclusive DownScan Overlay™ Finding – The patent-pending merger of DownScan Imaging™ with Broadband Sounder sonar in a single display uniquely separates fish from bottom and structure. DownScan Overlay™ (left) clearly exposes fish arch targets suspended over submerged trees.

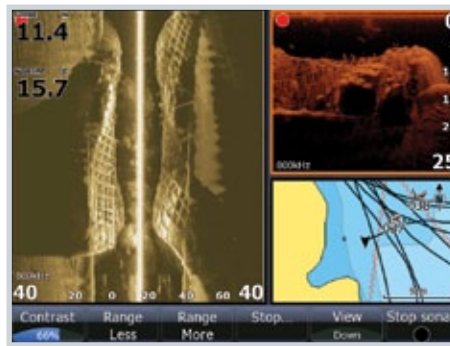


DownScan Overlay™ Illustrated – These screen shots of a sunken bridge support in a Montana lake clearly displays the difference DownScan Overlay™ can make. Compare the lower right sonar windows of each.

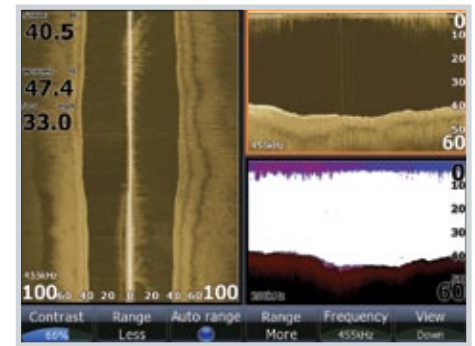
Without overlay (left), Broadband Sounder structure showing is excellent, but not well-defined. By adding DownScan Overlay (right) the structure—and fish—are clearly displayed.



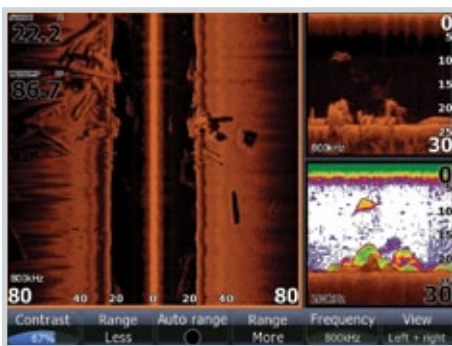
Unique Multi-Window Display – Add StructureScan™ imaging system option to your HDS and get the whole picture for wholly better fishing, with unique multi-window displays any combination of imaging, sounder and chartplotter views in up to four screen windows on HDS-8 and HDS-10 displays.



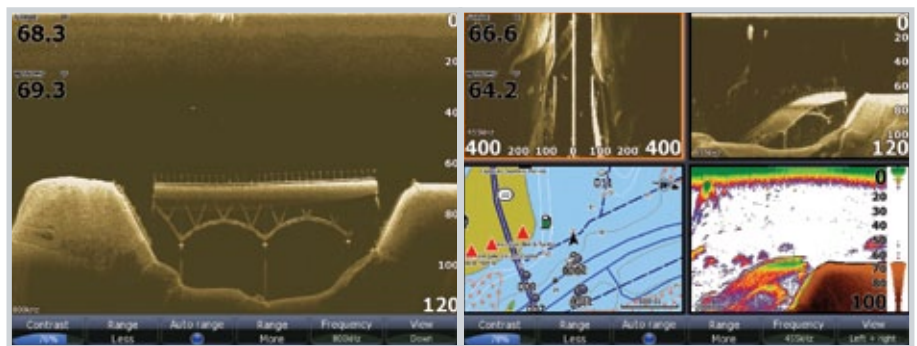
Synchronized TrackBack™ Tool – Another special StructureScan fishing edge is simultaneous scroll-back in all imaging, sonar and chartplotter history displays for a time- and fuel-saving way to revisit covered water and easily set waypoints. When networked with other HDS displays with mapping, waypoints set on one are automatically posted to all.



Speedy Relief – This screen view is seemingly unremarkable, until you notice the recorded boat speed—33 mph!—and still showing StructureScan side- and down-looking imaging without fade or break-up. So you can cover more water, and find productive structure and fishing faster.

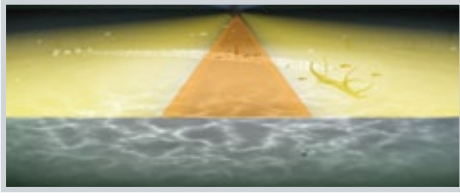


Pick Your Color(s) – Combine StructureScan with HDS and you have the most imaging and sonar color palette choices for the best view for water conditions and personal preference.

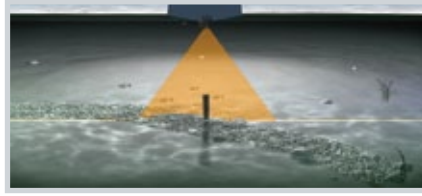


Surprising Findings in Your Future – StructureScan is already solving underwater mysteries as these screen shots from Smith Mountain Lake in Virginia show. Despite bathymetric studies and local legends to the contrary, StructureScan imaging proved a major bridge – covered by a lake-creating damming project in the 1960s – was still there.

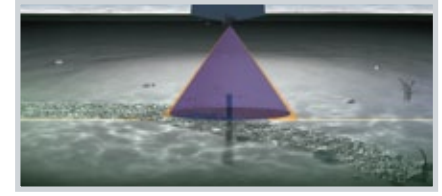
Proven StructureScan™ Sonar Imaging for HDS®



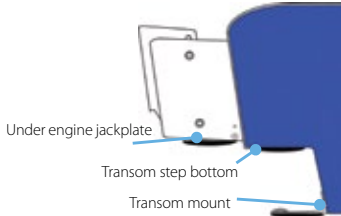
SideScan Imaging – Crisp side-viewing detail, up to 500 ft./152 m port to starboard, for wider-area surveys.
Depth range: to 150 ft./46 m
Bottom tracking: up to 35mph/56 kph
Mark baitfish-large objects: up to 15 mph/24 kph
Optimum imaging: 0.5-10 mph/0.8-16 kph



DownScan Imaging™ – The Lowrance innovation of a separate down-imaging transducer element for a true, dedicated view of what's under your boat. Removes all guesswork in targets identification with superior thermocline detection.
Depth range: to 300 ft./92 m
Bottom tracking: up to 55mph/88 kph
Mark baitfish-large objects: up to 35 mph/56 kph
Optimum imaging: 0.5-10 mph/0.8-16 kph



DownScan Overlay™ – Exclusive new technology overlays DownScan Imaging™ onto built-in HDS Broadband Sounder™ sonar for one stunning display to separate and clearly expose fish targets from surrounding structure. Overlay transparency and color palettes fully adjustable.



More Choice Locations for Installation

The rugged, low-profile, low-drag imaging transducer design provides freedom of choices for mounting locations. **Flush-mounts** under engine jackplate or under the transom step that's virtually drag-free. **Transom-mounts** with a brutally strong stainless-steel bracket featuring kick-up protection from water hazard strikes. Nearly-indestructible **trolling motor mounting** with the optional low-profile and durable adapter bracket.



Thru-Hull Imaging

For hull-mounting on most fresh and saltwater boats, the THSST-DF bolt-thru-hull transducer is the best low-profile, drag-eliminating choice for StructureScan™ sonar imaging, with fairing block included. For boats with a greater deadrise, install two thru-hull transducers, connect them with the Y cable to a single LSS-1 StructureScan™ module, and enjoy panoramic Lowrance sonar imaging to the left, down and right of your boat. Professional installation recommended.



Unlimited Networking

Share imaging and sonar transducers with up to three HDS onboard displays, each with display and function control, via the ease of plug-and-play ethernet networking.

StructureScan™ Imaging System Components

- LSS-1 StructureScan™ Imaging powered module
- SST-DFSBLK 455/800 kHz imaging transducer with 20 ft./6 m cable
- Stainless-steel transom-mount transducer bracket
- 15 ft./4.6 m ethernet network cable
- 12 vDC power cable
- Operation and installation instructions

Model	Part
LSS-1 StructureScan™ Sonar Imaging system	000-0132-06
LSS-1 StructureScan™ Sonar without imaging transducer	000-00099-002
HDS-5I-BNDL	
HDS-5 multifunction fishfinder/chartplotter with LSS-1 StructureScan™ system, built-in Lake Insight™ mapping and 83/200 kHz Skimmer™ transducer	000-00099-001

Accessories	Part
SS-TMB StructureScan™ transducer trolling motor bracket	000-0009-004
THSST-DF StructureScan™ thru-hull transducer	000-00099-003
LSS-TDY StructureScan™ Y Cable , connects two imaging transducers – THSST-DF or SST-DFSBLK – to one LSS-1 module	000-10202-001
10EX-BLK StructureScan™ 10 ft./3m transducer extension cable	000-00099-006
Ethernet Network Cables	
ETHEXT-6YL 6 ft./1.8 m	000-0127-51
ETHEXT-15YL 15 ft./4.5 m	000-0127-29
ETHEXT-25YL 25 ft./7.6 m	000-0127-30
ETHEXT-50YL 50 ft./15 m	000-0127-37